

EVIO Labs Medford (pka Kenevir Research)
 540 East Vilas Road, Suite F, Central Point, OR 97502
 541-668-7444 / OLCC 010-1001626980D / www.EVIOLabs.com

Suver Haze



Confident Cannabis ID: 1811KR0043.2598

Sample ID: M180874-02

Matrix: Hemp

METRC Batch #:

Sampling Method/SOP: SOP.T.20.010

Date Sampled: 11/09/18 09:00

Date Accepted: 11/09/18

Results Valid Until: 11/09/19

Harvest/Process Lot ID:

Batch ID:

Batch Size:

Unit for Sale:

Harvest/Production Date:

Cannabinoid Analysis

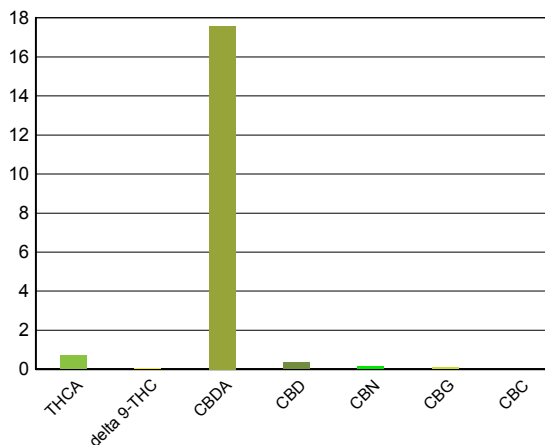
FOR INFORMATIONAL USE ONLY - NOT FOR REGULATORY PURPOSES

Date/Time Extracted: 11/12/18 09:53

Analysis Method/SOP: SOP.T.40.020

Date/Time Analyzed: 11/12/18 19:29

Cannabinoids	LOQ(%)	mg/g	% weight	Cannabinoids Profile
Total THC <small>((THCA*0.877)+Δ9THC)</small>		6.53	0.653	
Total CBD <small>((CBDA*0.877)+CBD)</small>		158	15.8	
THCA	0.0500	7.08	0.708	
delta 9-THC	0.0500	< LOQ	< LOQ	
delta 8-THC	0.0500	< LOQ	< LOQ	
CBDA	0.0500	176	17.6	
CBD	0.0500	3.52	0.352	
CBN	0.0500	1.53	0.153	
CBG	0.0500	0.995	0.0995	
CBC	0.0500	< LOQ	< LOQ	
Sum of tested Cannabinoids	0.0500	167	16.7	



"Total THC" and "Total CBD" are calculated values and are an Oregon reporting requirement (OAR 333-064-0100). For Cannabinoid analysis, only delta 9-THC, THCA, CBD, CBDA are ORELAP accredited analytes. Cannabinoid values reported for plant matter are dry weight corrected; Oregon Water Activity action level is 0.65Aw; Samples above limit will be highlighted **RED**; FD = Field Duplicate; LOQ = Limit of Quantitation.

Ian Riversong
 Laboratory Director - 11/16/2018

EVIO Labs Medford (pka Kenevir Research)
 540 East Vilas Road, Suite F, Central Point, OR 97502
 541-668-7444 / OLCC 010-1001626980D / www.EVIOLabs.com

FOR INFORMATIONAL USE ONLY - NOT FOR REGULATORY PURPOSES

Suver Haze

Info Only

Sample ID: M180874-02 METRC Batch #:
 Matrix: Hemp

Date Sampled: 11/09/18 09:00
 Date Accepted: 11/09/18
 Results Valid Until: 11/09/19
 Batch ID:
 Batch Size:
 Sampling Method/SOP: SOP.T.20.010

Terpene Analysis


Date/Time Extracted: 11/14/18 18:30

Analysis Method/SOP: SOP.T.40.090

Date/Time Analyzed: 11/15/18 01:55

Analyte	LOQ (mg/g)	Mass (mg/g)	Mass (%)	Analyte	LOQ (mg/g)	Mass (mg/g)	Mass (%)
alpha-Pinene	0.200	0.767	0.0767	beta-Pinene	0.200	0.431	0.0431
Camphene	0.200	< LOQ	< LOQ	Sabinene	0.200	< LOQ	< LOQ
Sabinene hydrate	0.200	< LOQ	< LOQ	beta-Myrcene	0.200	6.10	0.61
p-Mentha-1,5-diene	0.200	< LOQ	< LOQ	(+)-3-Carene	0.200	< LOQ	< LOQ
alpha-Terpinene	0.200	< LOQ	< LOQ	gamma-Terpinene	0.200	< LOQ	< LOQ
Limonene	0.200	0.768	0.0768	Eucalyptol	0.200	< LOQ	< LOQ
Guaiol	0.200	0.460	0.046	Terpinolene	0.200	< LOQ	< LOQ
Linalool	0.200	0.548	0.0548	Camphor	0.200	< LOQ	< LOQ
(+)-Camphor	0.200	< LOQ	< LOQ	(-)-Camphor	0.200	< LOQ	< LOQ
Isopulegol	0.200	< LOQ	< LOQ	(+)-Borneol	0.200	< LOQ	< LOQ
(-)-Borneol	0.200	< LOQ	< LOQ	Hexahydrothymol	0.200	< LOQ	< LOQ
Geraniol	0.200	< LOQ	< LOQ	(+)-Pulegone	0.200	< LOQ	< LOQ
Nerol	0.200	< LOQ	< LOQ	cis-Nerolidol	0.200	< LOQ	< LOQ
trans-Nerolidol	0.200	< LOQ	< LOQ	Geranyl acetate	0.200	< LOQ	< LOQ
alpha-Cedrene	0.200	< LOQ	< LOQ	trans-Caryophyllene	0.200	4.11	0.411
beta-Caryophyllene	0.200	< LOQ	< LOQ	alpha-Humulene	0.200	< LOQ	< LOQ
Valencene	0.200	< LOQ	< LOQ	alpha-Farnesene	0.200	4.83	0.483
beta-Farnesene	0.200	1.66	0.166	Cedrol	0.200	< LOQ	< LOQ
alpha-Bisabolol	0.200	1.40	0.14	Fenchone	0.200	< LOQ	< LOQ
Fenchyl Alcohol	0.200	< LOQ	< LOQ	trans, beta- Ocimene	0.200	< LOQ	< LOQ
beta, cis- Ocimene	0.200	1.22	0.122	Terpineol	0.200	0.216	0.0216
Total (Sum):						22.51	2.25

Analysis performed on GCMS with confirmation ion identification. Results reported as dry weight. ; LOQ = Limit of Quantitation;

 Ian Riversong
 Laboratory Director - 11/16/2018

EVIO Labs Medford (pka Kenevir Research)
 540 East Vilas Road, Suite F, Central Point, OR 97502
 541-668-7444 / OLCC 010-1001626980D / www.EVIOLabs.com

Quality Control

Batch: M18K051 - SOP.T.30.050 Prep for Cannabinoids

Blank(M18K051-BLK1)			Extracted: 11/12/18 09:53		Analyzed: 11/12/18 16:52		
Analyte	Result	LOQ	Recovery Limits	Analyte	Result	LOQ	Recovery Limits
THCA	< LOQ	0.0500 (%)	< LOQ	delta 9-THC	< LOQ	0.0500 (%)	< LOQ
delta 8-THC	< LOQ	0.0500 (%)	< LOQ	CBDA	< LOQ	0.0500 (%)	< LOQ
CBD	< LOQ	0.0500 (%)	< LOQ	CBG	< LOQ	0.0500 (%)	< LOQ
CBN	< LOQ	0.0500 (%)	< LOQ	CBC	< LOQ	0.0500 (%)	< LOQ
Sum of tested Cannabinoid:	< LOQ	0.0500 (%)	< LOQ				

LCS(M18K051-BS1)			Extracted: 11/12/18 09:53		Analyzed: 11/12/18 17:10		
Analyte	% Recovery	LOQ	Recovery Limits	Analyte	% Recovery	LOQ	Recovery Limits
THCA	105	(%)	70-130	delta 9-THC	106	(%)	70-130
CBDA	106	(%)	70-130	CBD	109	(%)	70-130



Ian Riversong
 Laboratory Director - 11/16/2018