

EVIO Labs Medford (pka Kenevir Research)
 540 East Vilas Road, Suite F, Central Point, OR 97502
 541-668-7444 / OLCC 010-1001626980D / www.EVIOLabs.com

Trump 5



Confident Cannabis ID: 1811KR0043.2600

Sample ID: M180874-04

Matrix: Hemp

METRC Batch #:

Sampling Method/SOP: SOP.T.20.010

Date Sampled: 11/09/18 09:00

Date Accepted: 11/09/18

Results Valid Until: 11/09/19

Harvest/Process Lot ID:

Batch ID:

Batch Size:

Unit for Sale:

Harvest/Production Date:

Cannabinoid Analysis

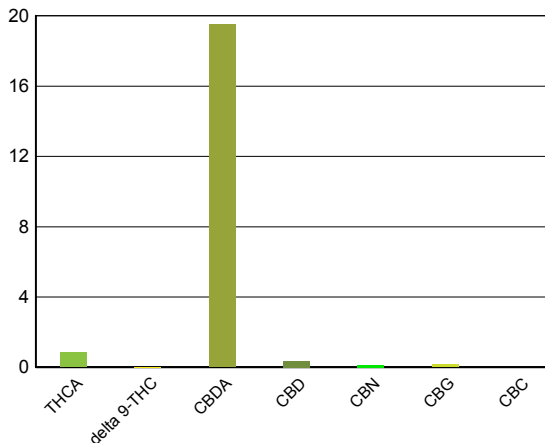
FOR INFORMATIONAL USE ONLY - NOT FOR REGULATORY PURPOSES

Date/Time Extracted: 11/12/18 09:53

Analysis Method/SOP: SOP.T.40.020

Date/Time Analyzed: 11/12/18 20:04

Cannabinoids	LOQ(%)	mg/g	% weight	Cannabinoids Profile
Total THC ((THCA*0.877)+Δ9THC)		7.51	0.751	
Total CBD ((CBDA*0.877)+CBD)		175	17.5	
THCA	0.0500	8.23	0.823	
delta 9-THC	0.0500	< LOQ	< LOQ	
delta 8-THC	0.0500	< LOQ	< LOQ	
CBDA	0.0500	195	19.5	
CBD	0.0500	3.55	0.355	
CBN	0.0500	1.27	0.127	
CBG	0.0500	1.5	0.150	
CBC	0.0500	< LOQ	< LOQ	
Sum of tested Cannabinoids	0.0500	185	18.5	



"Total THC" and "Total CBD" are calculated values and are an Oregon reporting requirement (OAR 333-064-0100). For Cannabinoid analysis, only delta 9-THC, THCA, CBD, CBDA are ORELAP accredited analytes. Cannabinoid values reported for plant matter are dry weight corrected; Oregon Water Activity action level is 0.65Aw; Samples above limit will be highlighted **RED**; FD = Field Duplicate; LOQ = Limit of Quantitation.

Ian Riversong
 Laboratory Director - 11/16/2018

EVIO Labs Medford (pka Kenevir Research)
 540 East Vilas Road, Suite F, Central Point, OR 97502
 541-668-7444 / OLCC 010-1001626980D / www.EVIOLabs.com

Quality Control

Batch: M18K051 - SOP.T.30.050 Prep for Cannabinoids

Blank(M18K051-BLK1)			Extracted: 11/12/18 09:53		Analyzed: 11/12/18 16:52		
Analyte	Result	LOQ	Recovery Limits	Analyte	Result	LOQ	Recovery Limits
THCA	< LOQ	0.0500 (%)	< LOQ	delta 9-THC	< LOQ	0.0500 (%)	< LOQ
delta 8-THC	< LOQ	0.0500 (%)	< LOQ	CBDA	< LOQ	0.0500 (%)	< LOQ
CBD	< LOQ	0.0500 (%)	< LOQ	CBG	< LOQ	0.0500 (%)	< LOQ
CBN	< LOQ	0.0500 (%)	< LOQ	CBC	< LOQ	0.0500 (%)	< LOQ
Sum of tested Cannabinoid:	< LOQ	0.0500 (%)	< LOQ				

LCS(M18K051-BS1)			Extracted: 11/12/18 09:53		Analyzed: 11/12/18 17:10		
Analyte	% Recovery	LOQ	Recovery Limits	Analyte	% Recovery	LOQ	Recovery Limits
THCA	105	(%)	70-130	delta 9-THC	106	(%)	70-130
CBDA	106	(%)	70-130	CBD	109	(%)	70-130



Ian Riversong
 Laboratory Director - 11/16/2018